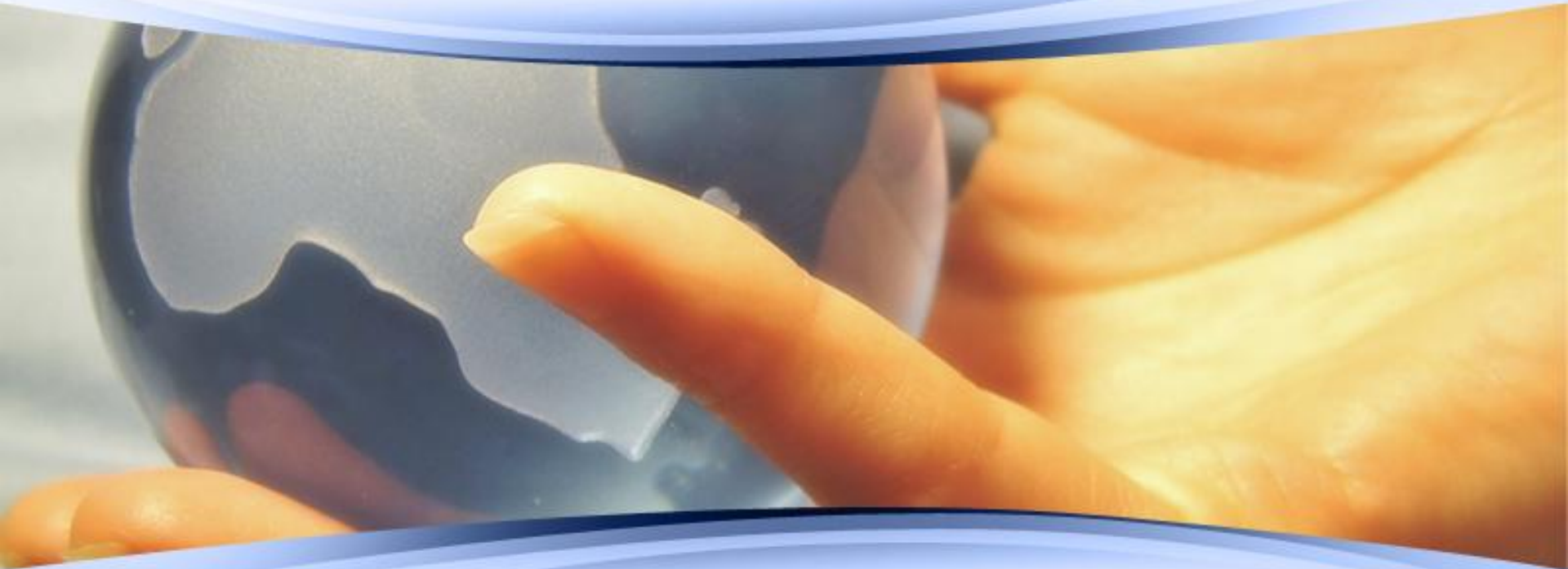


County of Tehama

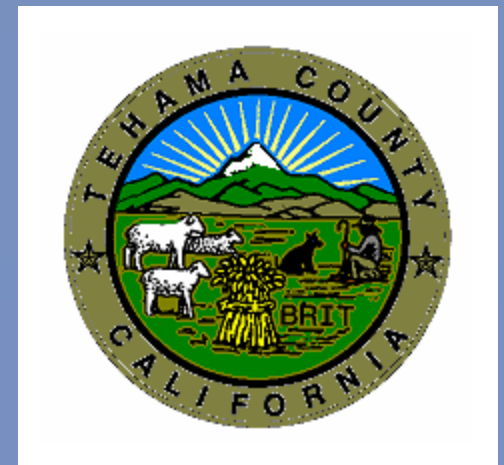
Landfill Operations and Diversion



# Demographics



- **Land Area 2951 sq. mi.**
- **Median resident age (2007) ~38 years**
- **2007 median household income \$39,389**
  - ~17 % residents were below poverty level (2007)
- **County Population (2008) 62,466**
  - City of Corning 7,207
  - City of Red Bluff 14,025
  - City of Tehama 451



Home to  
Lassen  
Volcanic  
National  
Park



# Location



- Midway between Sacramento and the Oregon border along I-5.
- The Sacramento River cuts through the central portion



# More than just a RODEO!!!

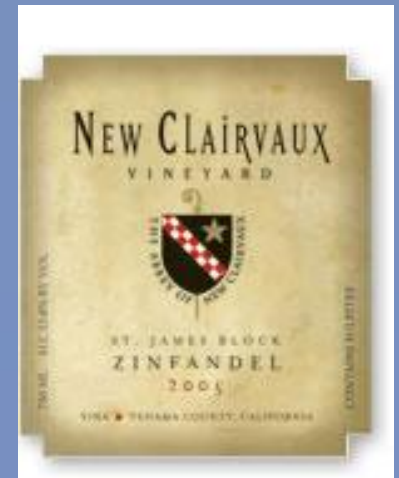
- Brings in 20,500 visitors
- A week of events



- Biggest income booster to the community to the tune of \$2.5m.

# Industry and Employment

- Primary Industry
  - Agriculture
    - (walnuts, almonds, plums, olives, timber)
  - Construction
  - Health Care
- Unemployment (May 2009)
  - Tehama County 13.8%
  - Statewide 11.2%



# JPA II



- Tehama County/Red Bluff Landfill Management Agency
  - JPA
  - Daily operations, permits, and environmental compliance
  - 2 FT employees
  - Full Board
    - Meets quarterly
    - consists of 5 Red Bluff City Council and 5 County BOS
  - Executive Committee
    - Meets monthly
    - Consists of two BOS and two RBCC

# JPA I



- Tehama County Sanitary Landfill Agency
- Closure, Post-closure, grants, AB939 diversion requirements.
- Consists of:
  - (1) BOS
  - (1) RBCC
  - (1) CCC
  - (1) TCC
  - (1) Public member-at-large
- Meets monthly





# Solid Waste/Recycling/Yard Waste Collection



- Waste Connections
  - dba GreenWaste
  - Unincorporated County, City of Tehama, City of Red Bluff
  - City of Red Bluff mandatory service
- Waste Management
  - City of Corning mandatory service

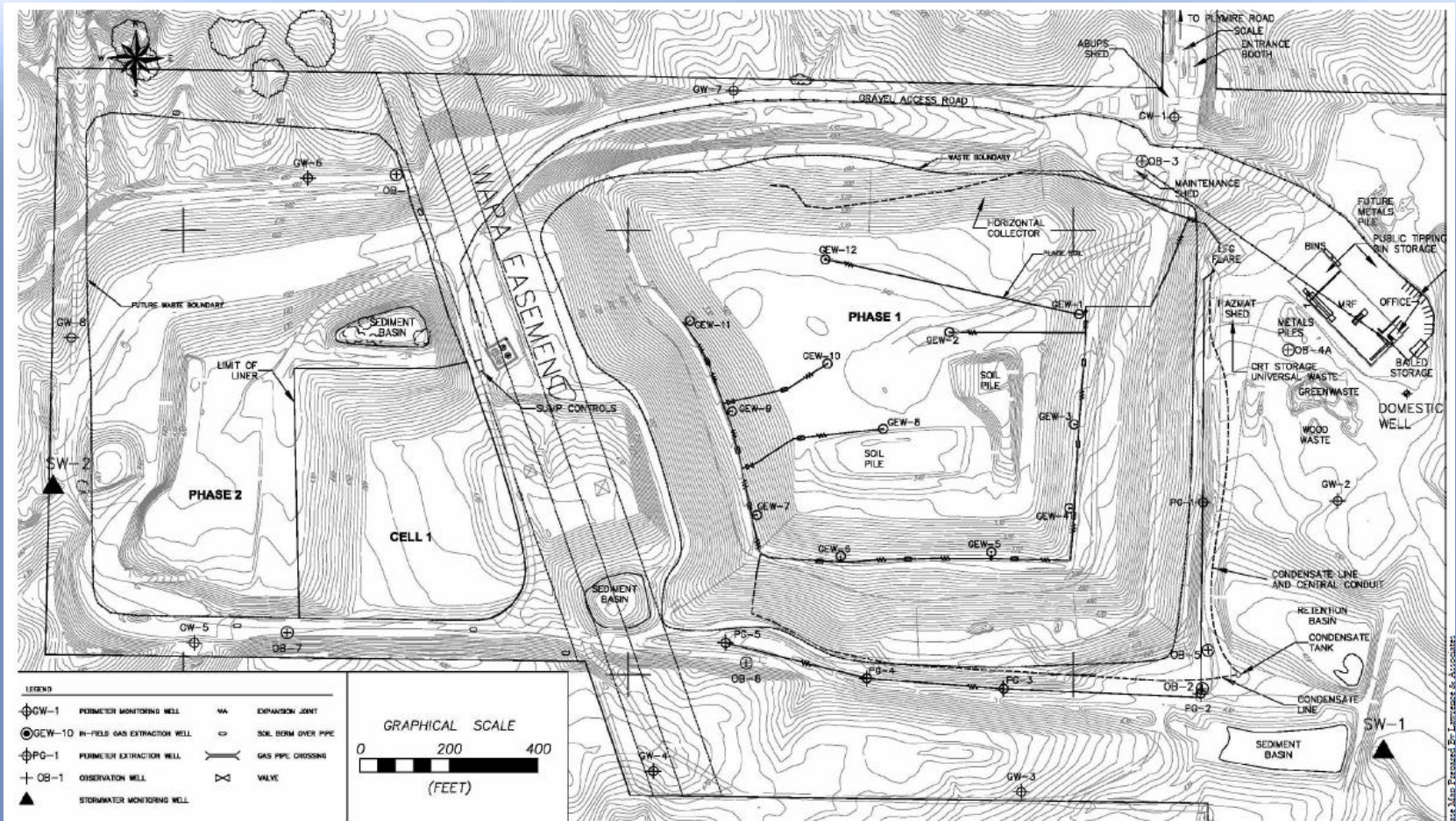
# Tehama County Red Bluff Landfill



- Operated by Waste Connections (dba GreenWaste)
- Material Recovery Facility
- Phase I and Phase 2 Landfills
  - Current 5.1 m cy total permitted capacity
  - Proposed 6.3 m cy
- Annual tonnage landfilled 45,000 tons
- Tipping fee \$43.22
- Agency receives 12.36% of gate fee revenue



# Phase I and Phase II Landfills



# Phase I



- Landfill Gas Extraction System

- but no LFGE project!

- NEW SWFP

- Increase height 20'

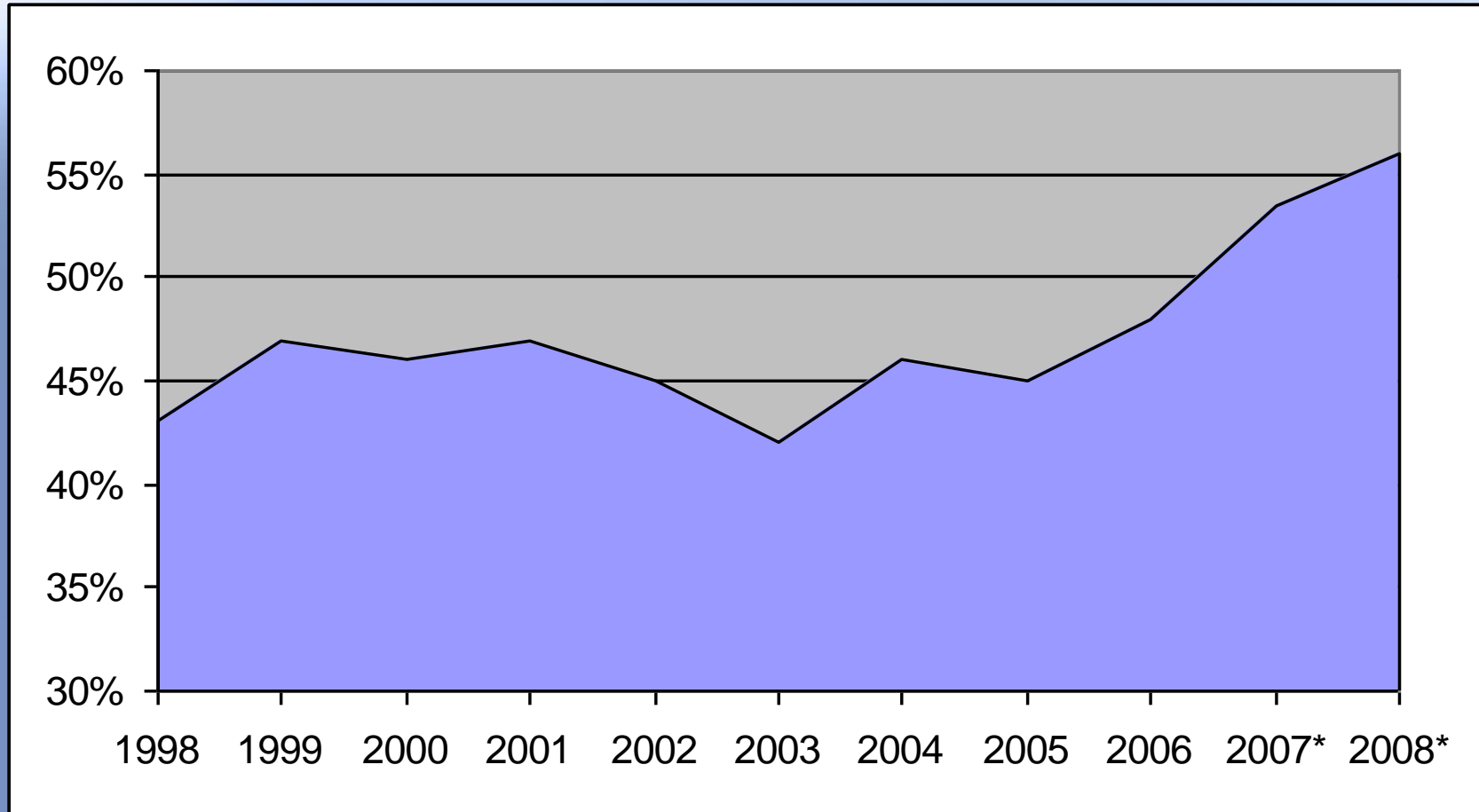
- Provide 5 years of space

- Increase vehicle trips from 200 to 250 per day

- Increase daily permitted tonnage from 400 to 600



# Diversion Rate Trends



# Landfill Diversion Programs



- Expanded blue roll-out cart curbside recyclable collection in the densely populated areas of the unincorporated county, City of Tehama, and the City of Corning



# Diversion Programs



- Implemented a MFR program in Red Bluff
  - Non-mandatory program
  - All complexes (except one) that have participated in the three month trial program, have been able to save money by recycling!
  - A total of 381 apartment units and 105 mobile home units now have access to recycling.

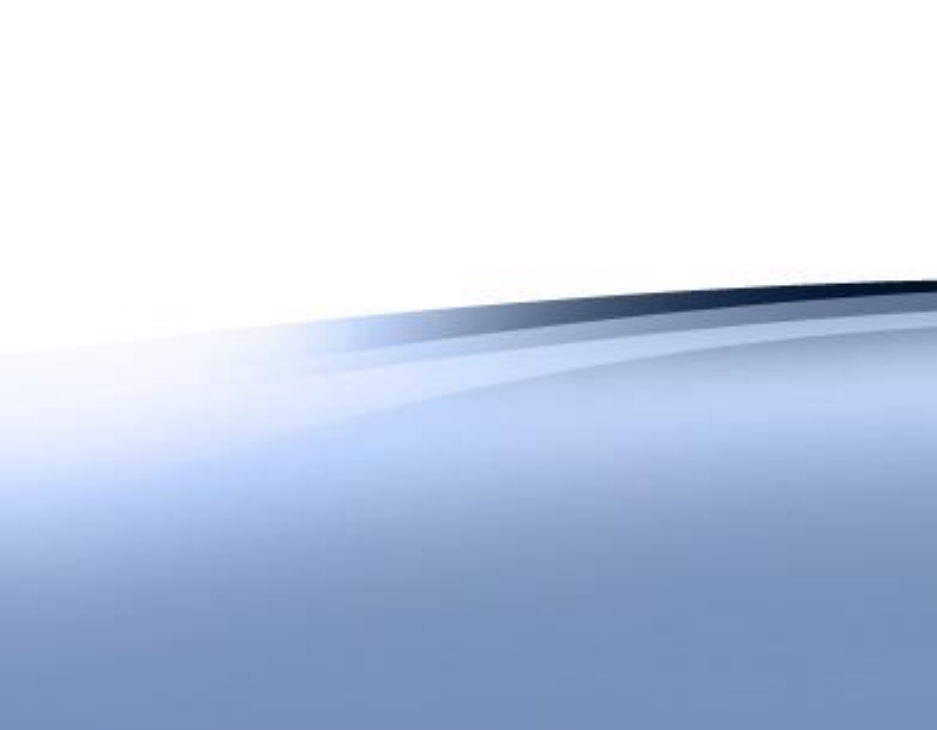
# Diversion Programs



- Adjusted fee structure to reflect reduced fees for segregated loads of yard waste and metal
- Adjusted fee structure to accept clean concrete, asphalt, and up to five cubic yards of soil free of charge







# Diversion Programs



WORKER

FLAMMABLE

DANGER  
PELIGRO

# Landfill Diversion Programs



- Developed a Large Venue Event Recycling Program
- Developed a Mattress Recycling Program
- Developed a LEED Construction and Demolition Waste Management Plan

# Large Venue Event Recycling Program



- Up to (20) 64 gallon Recycling carts free
- GreenWaste provides drop-off/pick-up as a courtesy.
- Fill out reservation form
- 11 events since April 2009



# Mattress Recycling Program



# LEED Construction and Demolition Waste Management Plan



# Universal Waste Diversion Programs



- Fluorescent Light Recycling Program
- Curbside Alkaline Battery Recycling Program
- Medical Waste Sharps Collection Program



# Fluorescent Light Recycling Program



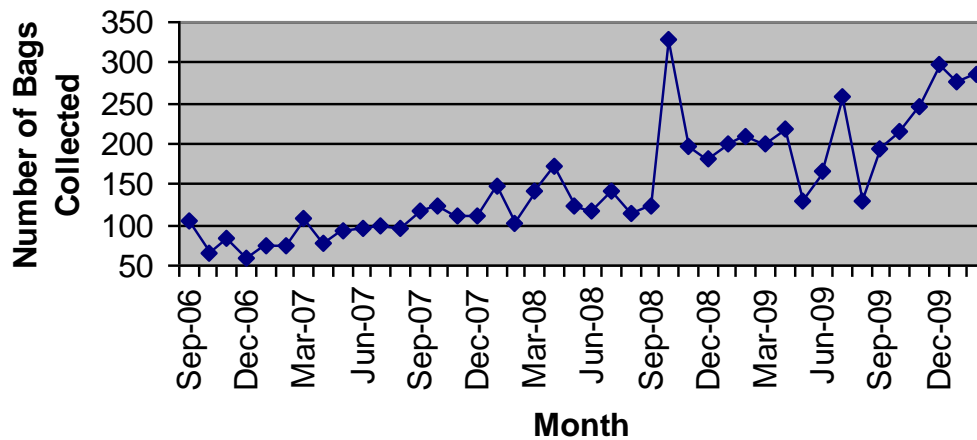




# Curbside Alkaline Battery Recycling Program



**Battery Bags Collected September 2006  
through Present**



# Medical Waste Sharps Collection Program



# In the works....



- Multi-Family Recycling Program
  - 2 DOC grants
  - Apartments in the City of Corning, and mobile home parks in the unincorporated County
- Reuse Facility/Closet
  - Reduce HHW disposal costs
- Latex Paint Take Back Program
  - HD-17 Paint Product Stewardship grant
- Fair Recycling Program

# Fair Recycling Program



# Public Education and Outreach



## Crucial for long-term success!

In 2009

- 58 classroom presentations
- Career Day
- Education Fair Day
- 6 No Waste Lunches



# THE PLASTIC BAG MONSTER



Thank you...



Please contact me at:  
Kristina Miller, Landfill Agency Manager  
Tehama County/Red Bluff Landfill  
Management Agency  
[recycle@clearwire.net](mailto:recycle@clearwire.net)  
530.528.1103